

Mrs.Me presents

# ALTEREGO

Who would you like to be, if only for a day?



Mrs.Me  
HOME COUTURE

3	INTRO
4	AMELIA
8	FAYE
12	JEAN
16	NINA
20	ROÍSÍN
24	EILEEN
28	DONNA
32	CHARLIZE
36	FRIDA
40	SHERILYN
44	AVA
48	GRACE
53	QUALITY & CARE
54	DUVET COVER SETS & NECK ROLL COVERS
56	THROWS & BLANKETS
58	BED SPREADS
60	FABRIC CUSHIONS
63	LEATHER CUSHIONS
66	COMPANY INFO
67	COLOPHON



# WHO WOULD YOU LIKE TO BE, IF ONLY FOR A DAY?

I can picture myself toying with Donna Tartt’s sharp pencil or mesmerizing an audience with a voice like Nina Simone’s. And I often wonder how it would feel to see the world through the eyes of Frida Kahlo, or to seduce with a single look, like Grace Kelly or Jean Shrimpton could. I like to imagine stepping into the shoes of Amelia Earhart, speeding through blue skies towards a far-away sunset. And I would love to spend a day in the sea-view villa of Eileen Gray.....  
Daydreaming can be so sweet, so how about prolonging the fantasy?

The ALTER **EGO** collection is my tribute to cutting edge female artists and style icons of past and present. These daring women have inspired me to create atmospheres reminiscent of the worlds they called home. Their lifestyles, ideals and achievements handed me ideas about styles, colours and materials.

In this collection you will find a great variety of seductively tactile fabrics. Cushions are made of course-knitted raffia, longhaired cow skin, or handcrafted from a special selection of vintage silk shawls. For the bed linens soft and smooth Egyptian cotton percale or sateen is used, in thread count 300 or 500.  
A wide range of evocative colours like ink, ebony, olive and burgundy grace bedspreads, blankets and pillows.  
Bed linens come in timeless shades like pearl, sand or white, with the couture detailing that characterizes a true Mrs.Me design.

With ALTER **EGO**, I invite you to dress your home with a sense of adventure. Whoever you wish to be, share your dreams with Mrs.Me.

Lianne Ernst  
Creative director





AMELIA



This page: padded duvet cover set **HARLEY** *white*, neck roll pillows **COOPER** *white*, padded bed-end spread **TYLER** *light grey*, blanket **KNITTED MOHAIR PLAIN** *light grey*, reversible cushions **TYLER** *light grey*, wrinkled leather cushion **GARDEN** *warm grey*, longhaired cow skin cushions **JAMES** *olive*. Opposite: reversible padded bed-end spread **TYLER** *light grey*.

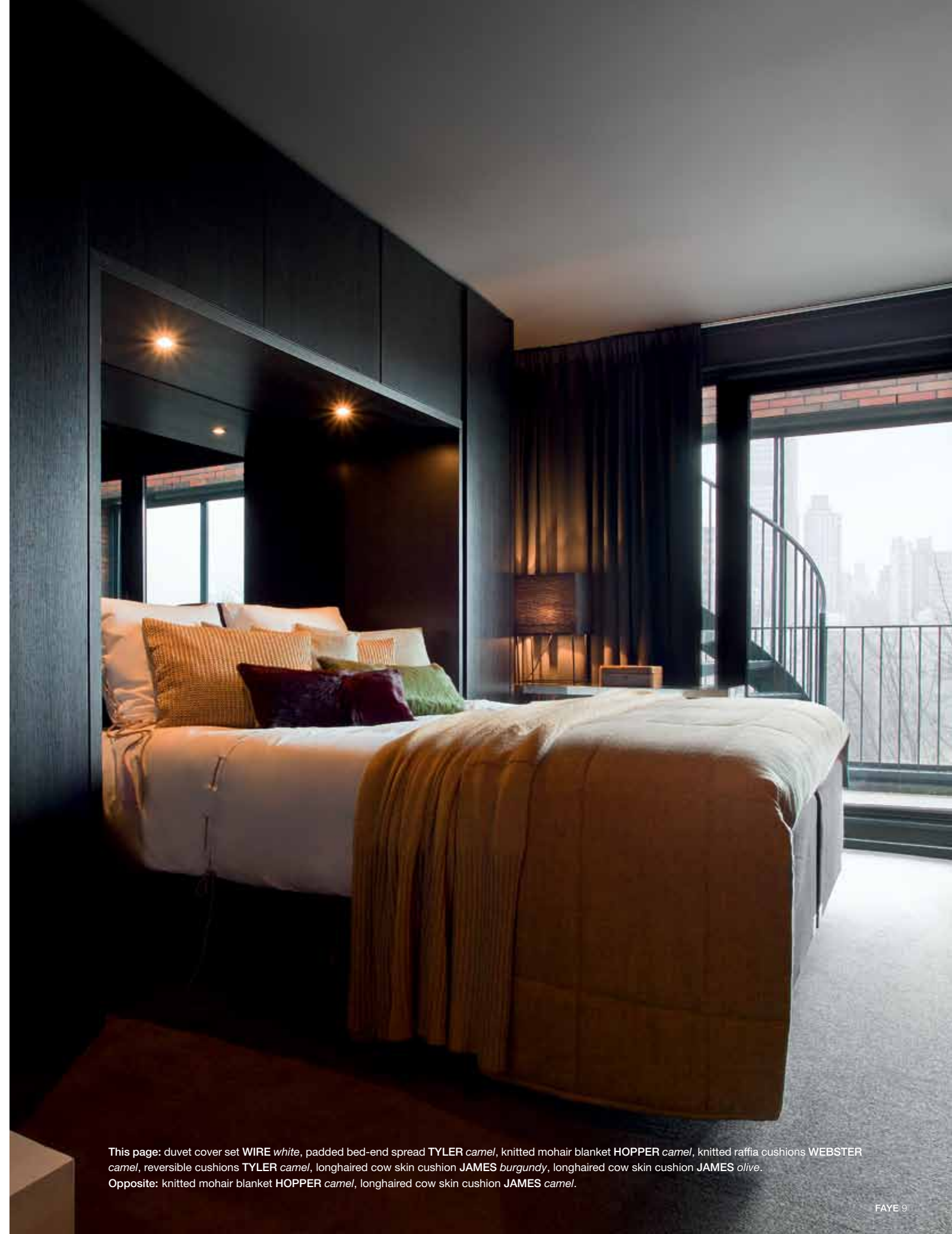




This page: padded bed-end spread TYLER *light grey*. Opposite: throw KNITTED MOHAIR PLAIN *jade*, reversible cushions TYLER *light grey*, wrinkled leather cushion GARDEN *warm grey*, longhaired cow skin cushion JAMES *olive*, fish leather cushion AVENUE *white*.



FAYE



This page: duvet cover set **WIRE** *white*, padded bed-end spread **TYLER** *camel*, knitted mohair blanket **HOPPER** *camel*, knitted raffia cushions **WEBSTER** *camel*, reversible cushions **TYLER** *camel*, longhaired cow skin cushion **JAMES** *burgundy*, longhaired cow skin cushion **JAMES** *olive*.  
Opposite: knitted mohair blanket **HOPPER** *camel*, longhaired cow skin cushion **JAMES** *camel*.





This page: knitted mohair blanket **HOPPER camel**. Opposite: coated linen cushions **SILVER**, knitted raffia cushions **WEBSTER camel**, longhaired cow skin cushion **JAMES burgundy**, longhaired cow skin cushion **JAMES camel**.







JEAN



This page: duvet cover set SAVILE pearl, neck roll pillows COOPER white, padded bed-end spread MASON night blue, knitted mohair blanket HOPPER blue jean, reversible cushions MASON night blue, longhaired cow skin cushion JAMES camel. Opposite: neck roll pillows COOPER white, padded bed-end spread MASON night blue, reversible cushions MASON night blue, longhaired cow skin cushion JAMES ink.





This page: knitted mohair blanket HOPPER blue jean, reversible cushions MASON night blue, metallic leather cushions PAVILION graphite.  
Opposite: longhaired cow skin cushion JAMES camel.





NINA



This page: duvet cover set **COUTURE white**, padded bed-end spread **LLOYD graphite**, reversible cushions **LLOYD graphite**, knitted raffia cushions **WEBSTER white**, fish leather cushion **AVENUE ebony**. Opposite: duvet cover set **COUTURE white**.



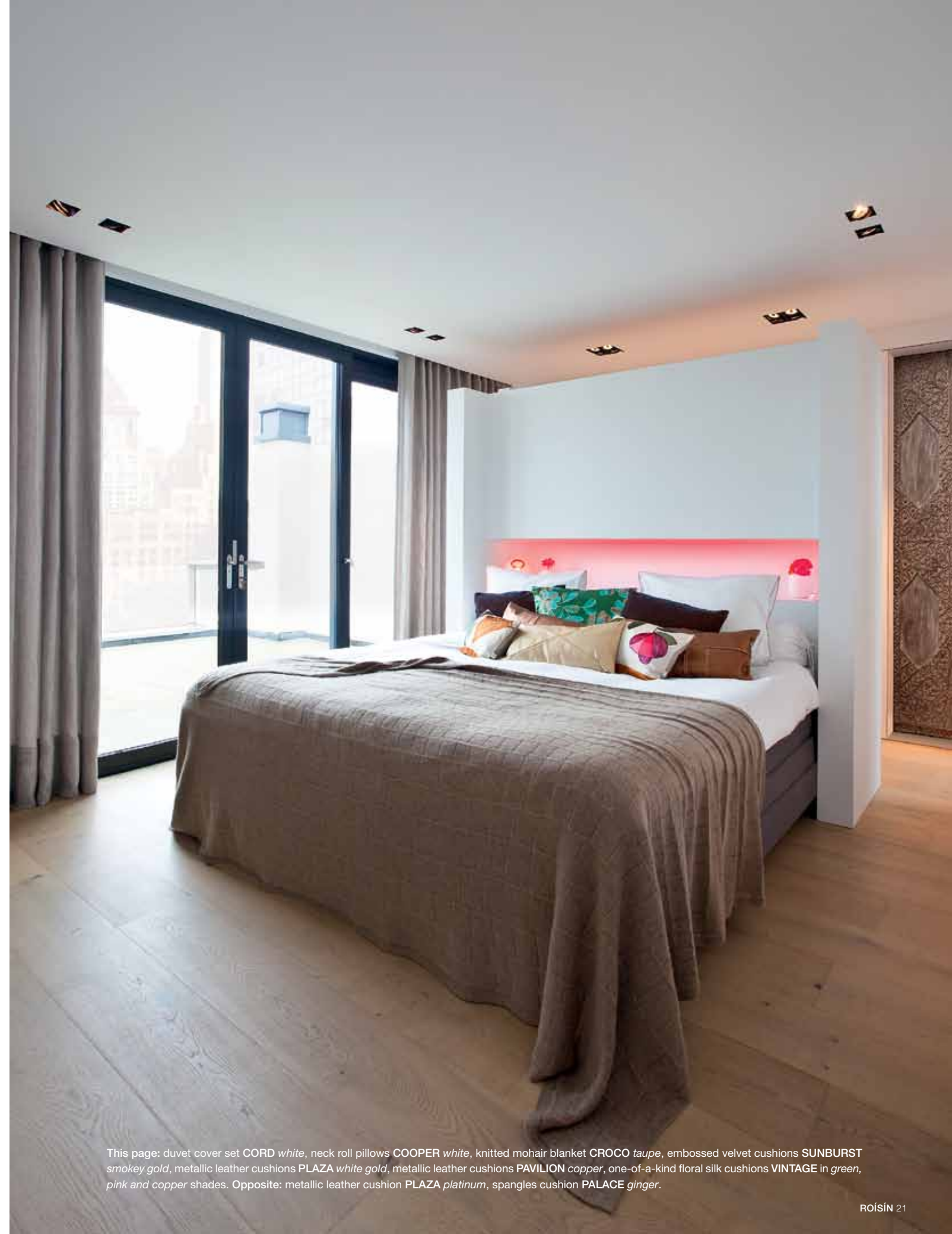


Duvet cover set **COUTURE** *white*, neck roll pillows **COOPER** *white*, padded bed-end spread **LLOYD** *graphite*, reversible cushions **LLOYD** *graphite*, knitted raffia cushions **WEBSTER** *white*, fish leather cushion **AVENUE** *ebony*.





ROÍSÍN



This page: duvet cover set **CORD** white, neck roll pillows **COOPER** white, knitted mohair blanket **CROCO** taupe, embossed velvet cushions **SUNBURST** smokey gold, metallic leather cushions **PLAZA** white gold, metallic leather cushions **PAVILION** copper, one-of-a-kind floral silk cushions **VINTAGE** in green, pink and copper shades. Opposite: metallic leather cushion **PLAZA** platinum, spangles cushion **PALACE** ginger.





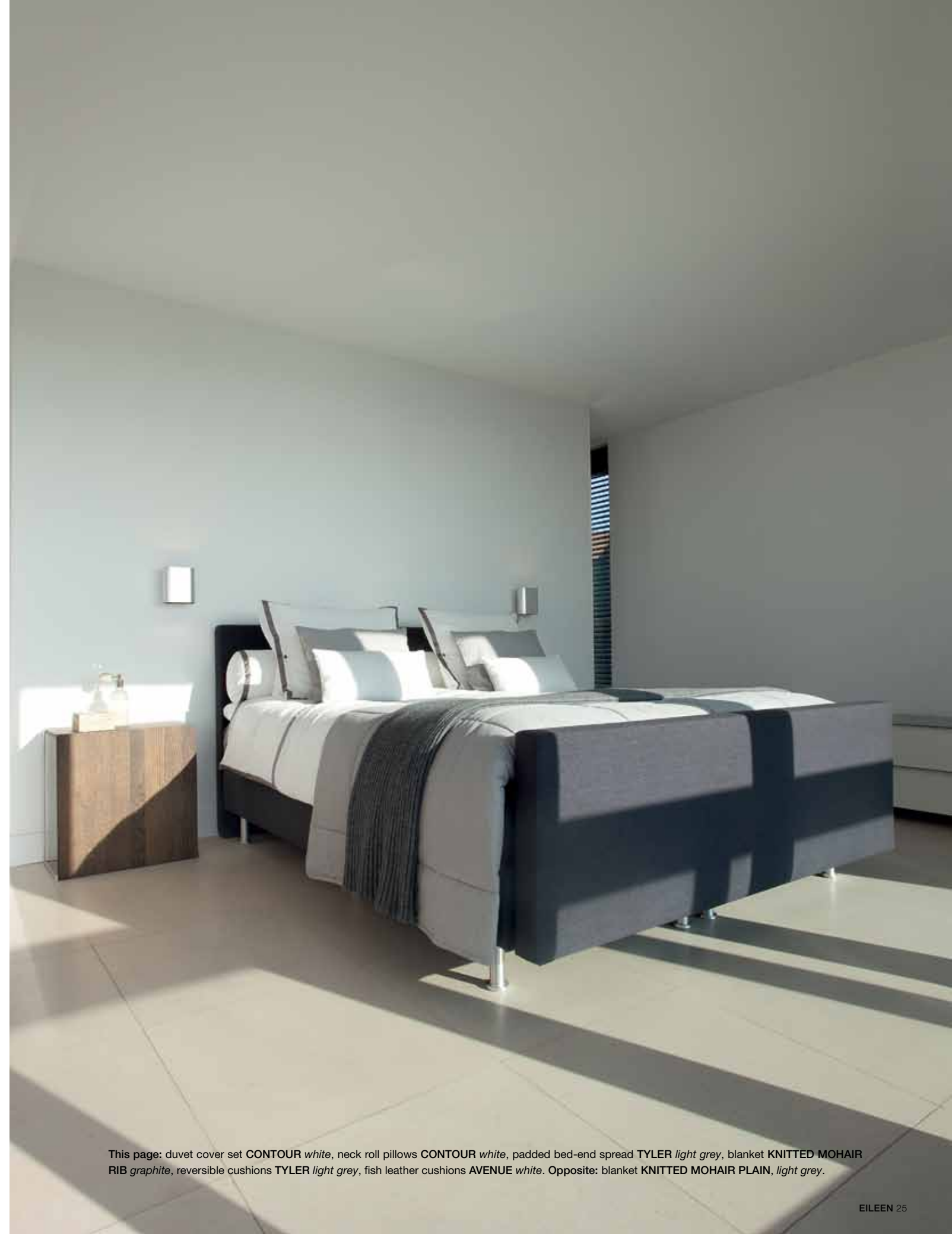
This page: knitted mohair blanket **CROCO** taupe, one-of-a-kind floral silk cushions **VINTAGE** in *orange* and *pink*, metallic leather cushions **PAVILION** *copper*, metallic leather cushions **PLAZA** in *platinum* and *white gold*, coated linen cushions **SILVER**. Opposite: metallic leather cushions **PAVILION** *copper*.







EILEEN

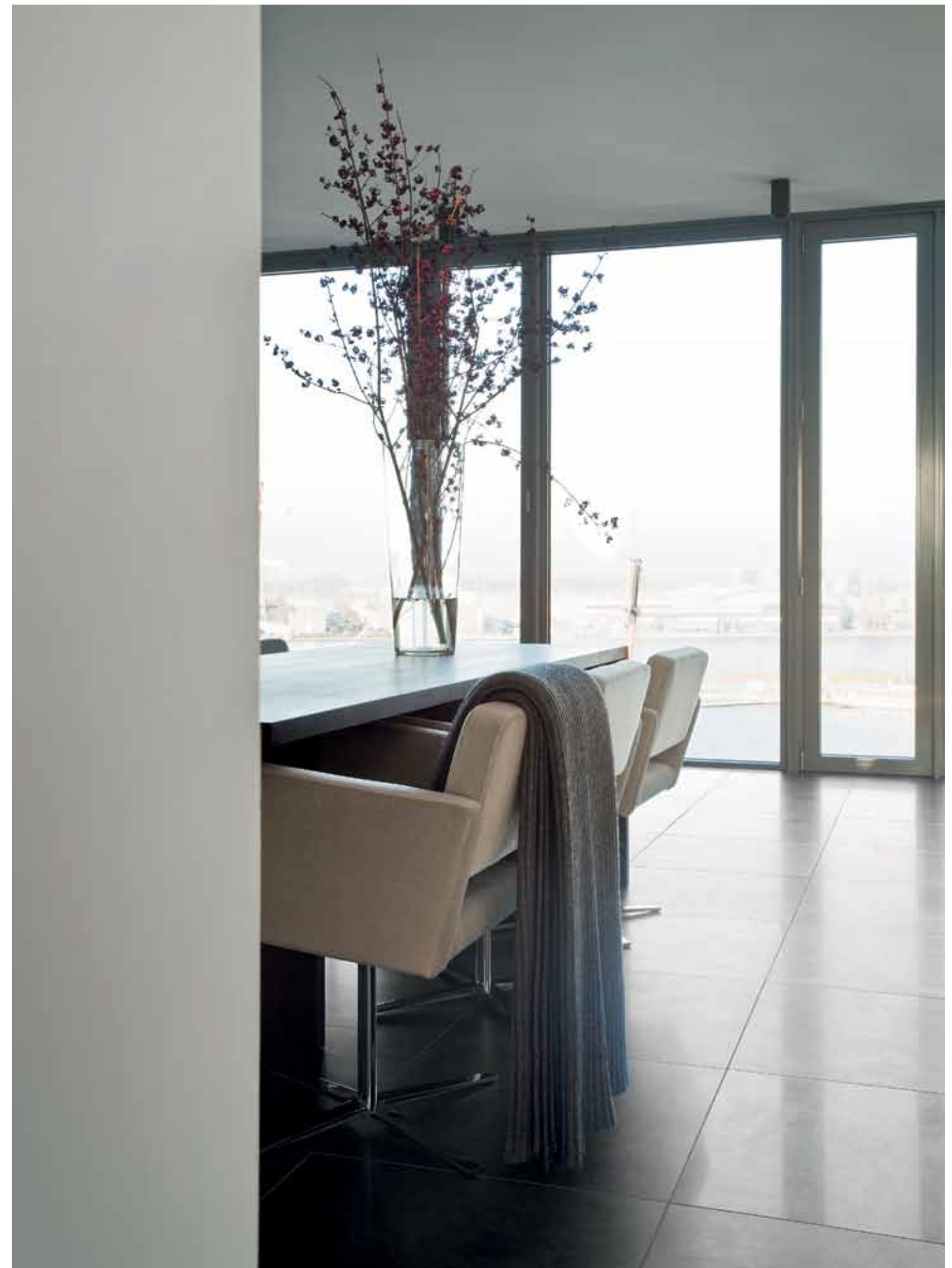


This page: duvet cover set CONTOUR *white*, neck roll pillows CONTOUR *white*, padded bed-end spread TYLER *light grey*, blanket KNITTED MOHAIR RIB *graphite*, reversible cushions TYLER *light grey*, fish leather cushions AVENUE *white*. Opposite: blanket KNITTED MOHAIR PLAIN, *light grey*.





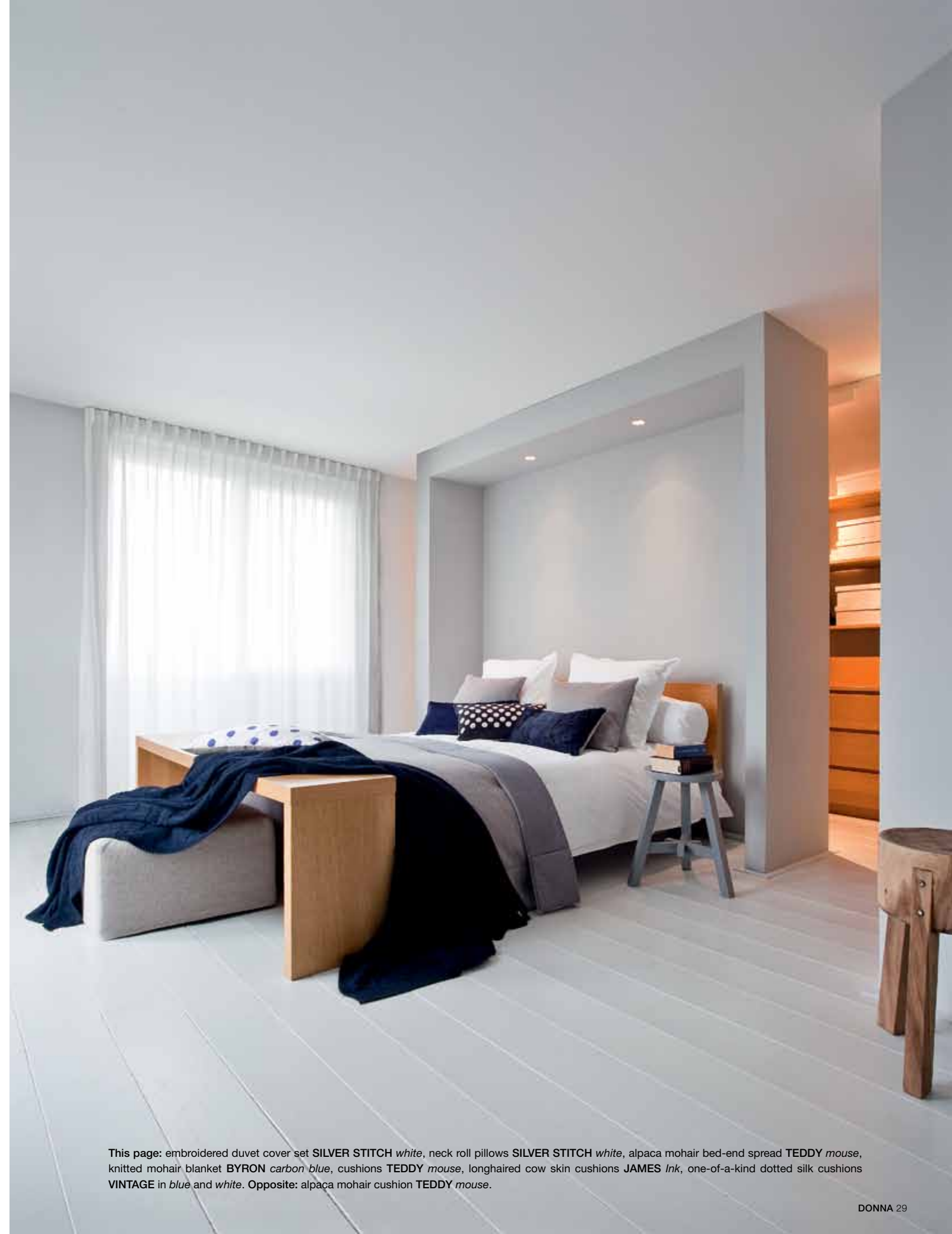
This page: reversible cushion TYLER *light grey*, one-of-a-kind floral silk cushion VINTAGE *multicolour*, fish leather cushions AVENUE *ebony*.  
Opposite: blanket KNITTED MOHAIR RIB *graphite*.







DONNA



This page: embroidered duvet cover set **SILVER STITCH** white, neck roll pillows **SILVER STITCH** white, alpaca mohair bed-end spread **TEDDY** mouse, knitted mohair blanket **BYRON** carbon blue, cushions **TEDDY** mouse, longhaired cow skin cushions **JAMES** Ink, one-of-a-kind dotted silk cushions **VINTAGE** in blue and white. Opposite: alpaca mohair cushion **TEDDY** mouse.





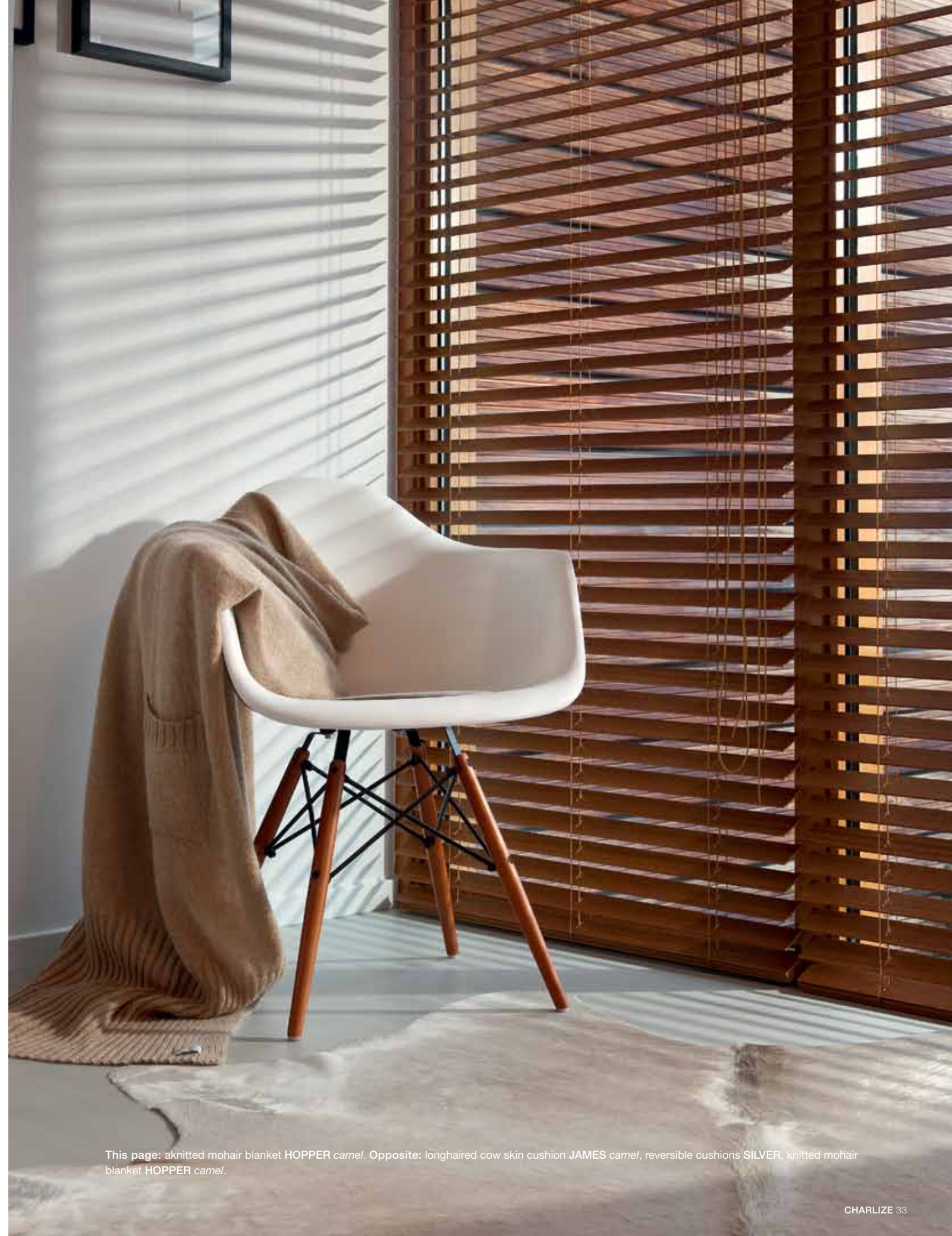
This page: embroidered duvet cover set **SILVER STITCH** *white*, neck roll pillows **SILVER STITCH** *white*, alpaca mohair bed-end spread **TEDDY** *mouse*, cushions **TEDDY** *mouse*, longhaired cow skin cushions **JAMES** *ink*, one-of-a-kind dotted silk cushion **VINTAGE** *blue*.  
Opposite: knitted mohair blanket **BYRON** *carbon blue*, alpaca mohair cushions **TEDDY** *mouse*, longhaired cow skin cushion **JAMES** *ink*.







CHARLIZE



This page: knitted mohair blanket HOPPER camel. Opposite: longhaired cow skin cushion JAMES camel, reversible cushions SILVER, knitted mohair blanket HOPPER camel.



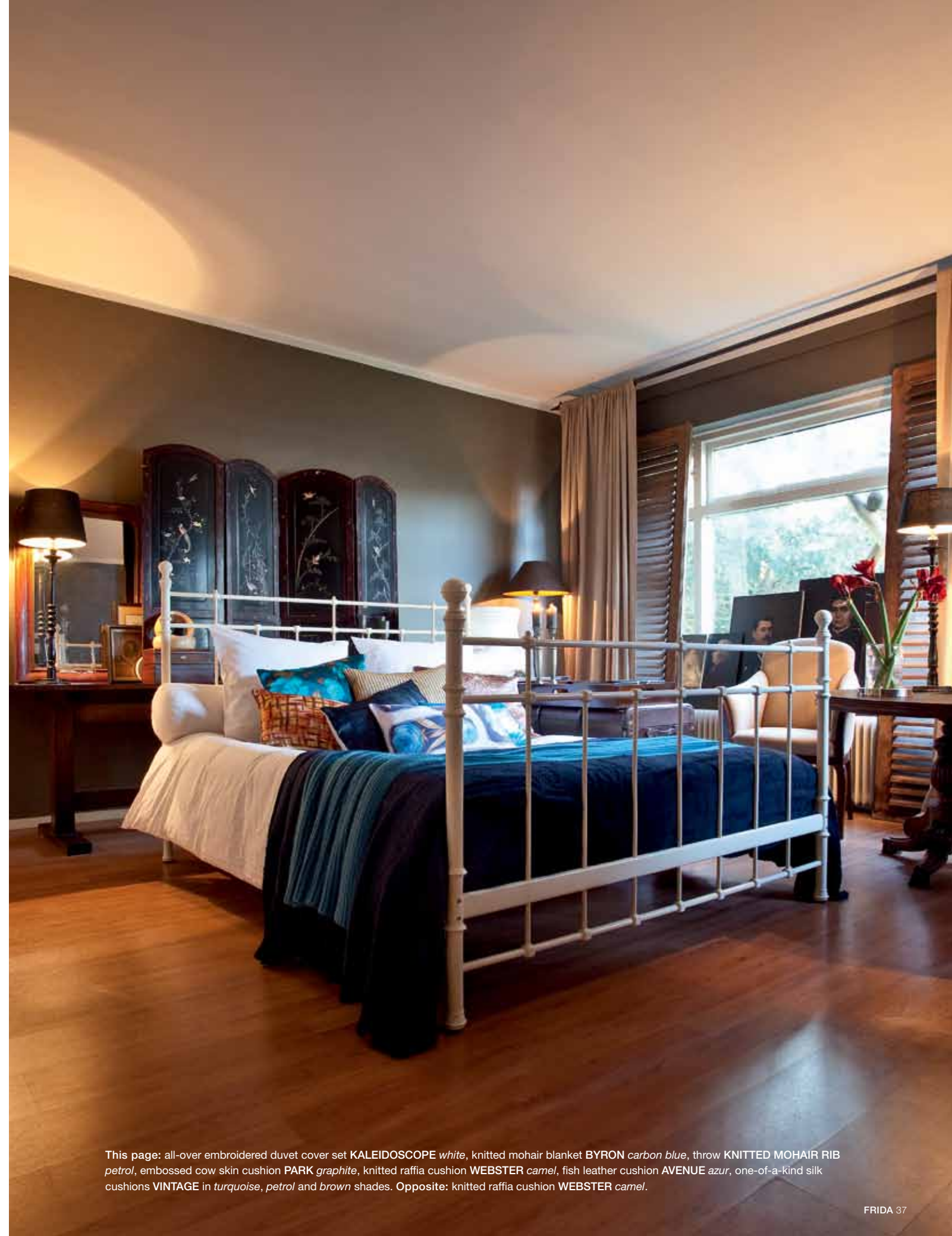


Duvet cover set **OBLIQUE** white, neck roll pillows **COOPER** white, padded coated linen bed-end spread **SILVER PAD**, knitted mohair blanket **HOPPER** camel, reversible cushions **SILVER**, longhaired cow skin cushion **JAMES** camel.





FRIDA

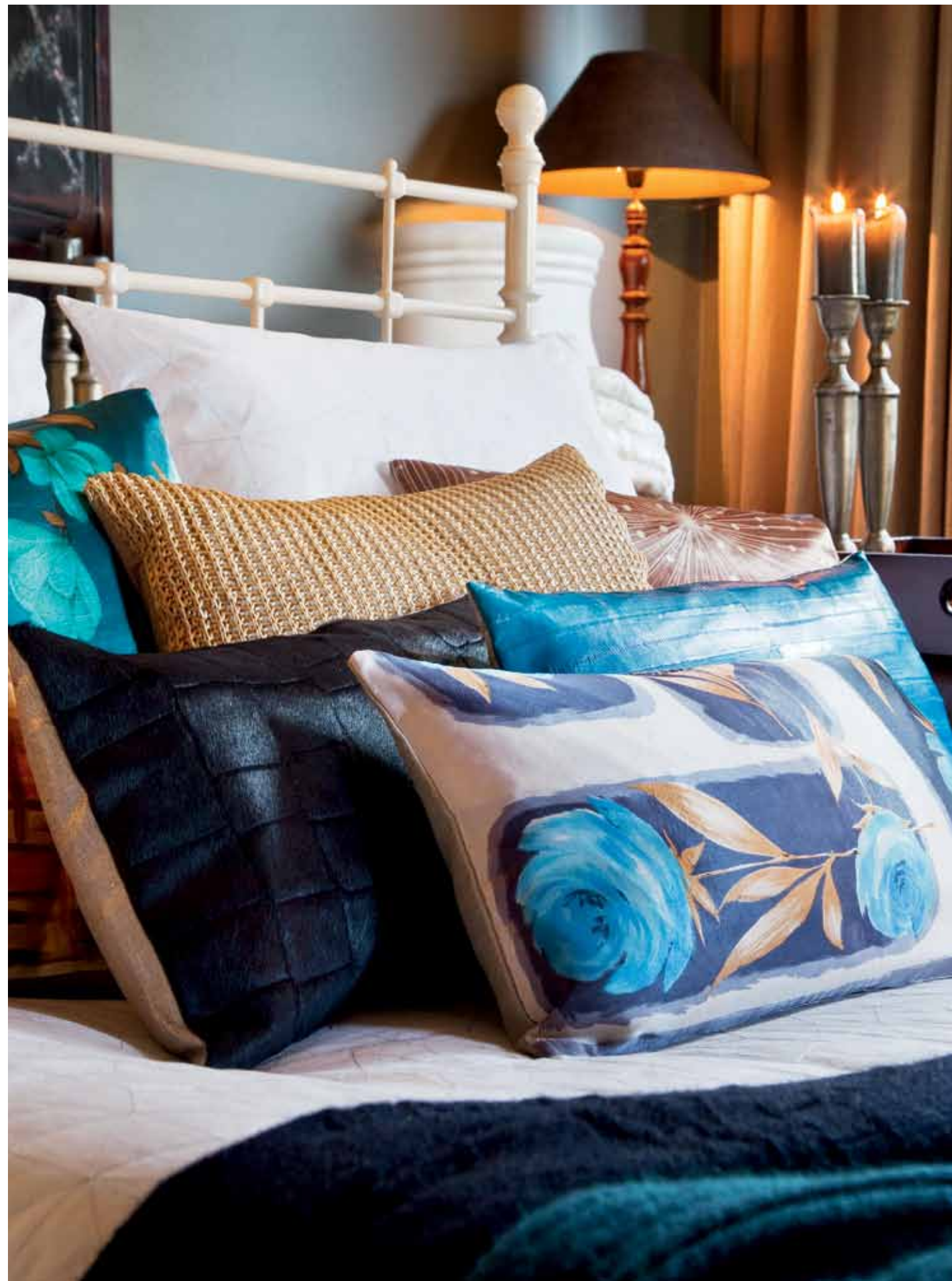


This page: all-over embroidered duvet cover set **KALEIDOSCOPE** *white*, knitted mohair blanket **BYRON** *carbon blue*, throw **KNITTED MOHAIR RIB** *petrol*, embossed cow skin cushion **PARK** *graphite*, knitted raffia cushion **WEBSTER** *camel*, fish leather cushion **AVENUE** *azur*, one-of-a-kind silk cushions **VINTAGE** in *turquoise*, *petrol* and *brown* shades. Opposite: knitted raffia cushion **WEBSTER** *camel*.





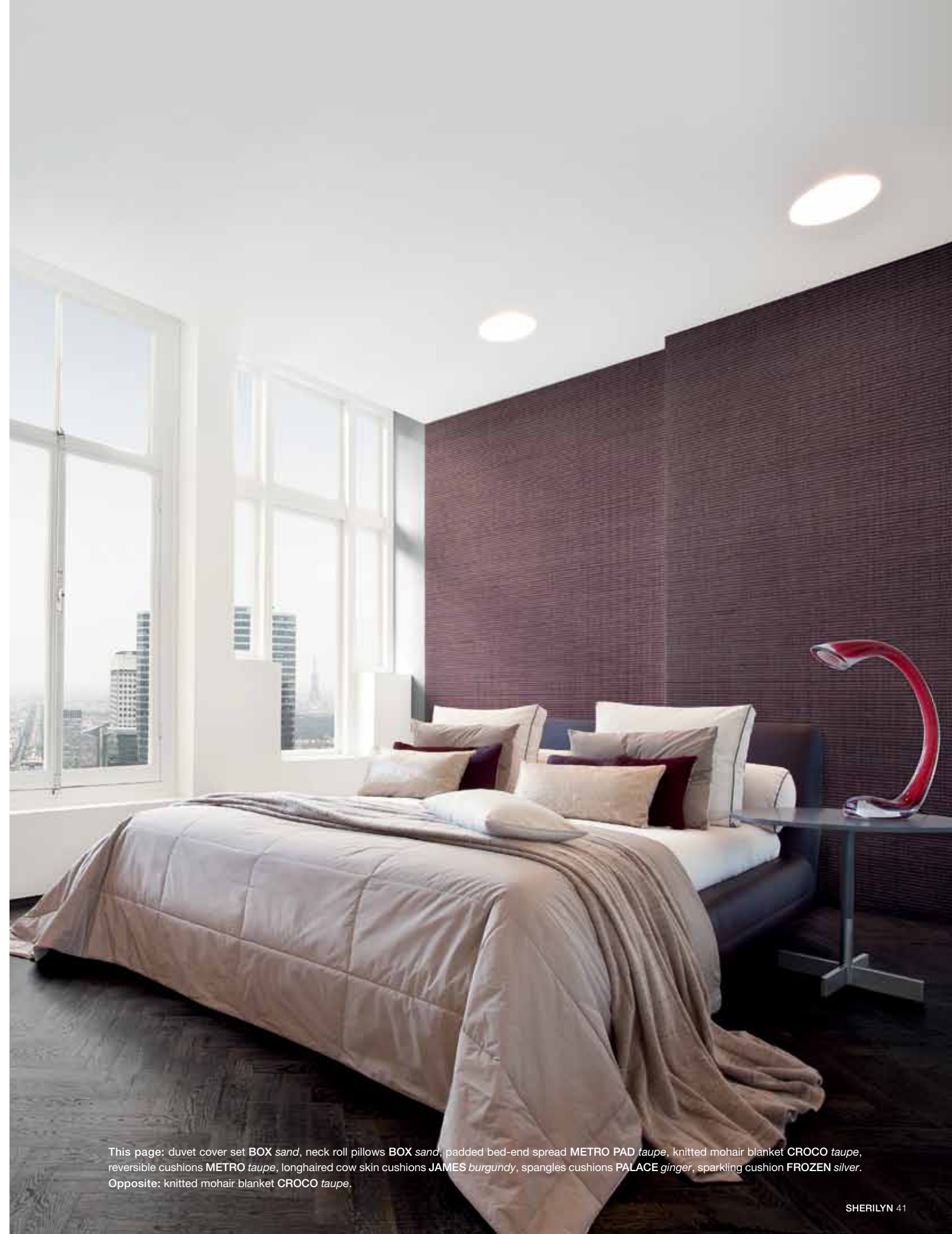
This page: one-of-a-kind floral silk cushions **VINTAGE** in *turquoise* and *petrol* shades, embossed cow skin cushion **PARK** *graphite*, fish leather cushion **AVENUE** *azur*. Opposite: all-over embroidered duvet cover set **KALEIDOSCOPE** *white*, neck roll pillows **KALEIDOSCOPE** *white*, knitted mohair blanket **BYRON** *carbon blue*, throw **KNITTED MOHAIR RIB** *petrol*, embossed cowskin cushion **PARK** *graphite*, knitted raffia cushion **WEBSTER** *camel*, fish leather cushion **AVENUE** *azur*, one-of-a-kind silk cushions **VINTAGE** in *turquoise*, *petrol* and *brown* shades.







SHERILYN



This page: duvet cover set **BOX sand**, neck roll pillows **BOX sand**, padded bed-end spread **METRO PAD taupe**, knitted mohair blanket **CROCO taupe**, reversible cushions **METRO taupe**, longhaired cow skin cushions **JAMES burgundy**, sparkles cushions **PALACE ginger**, sparkling cushion **FROZEN silver**.  
Opposite: knitted mohair blanket **CROCO taupe**.



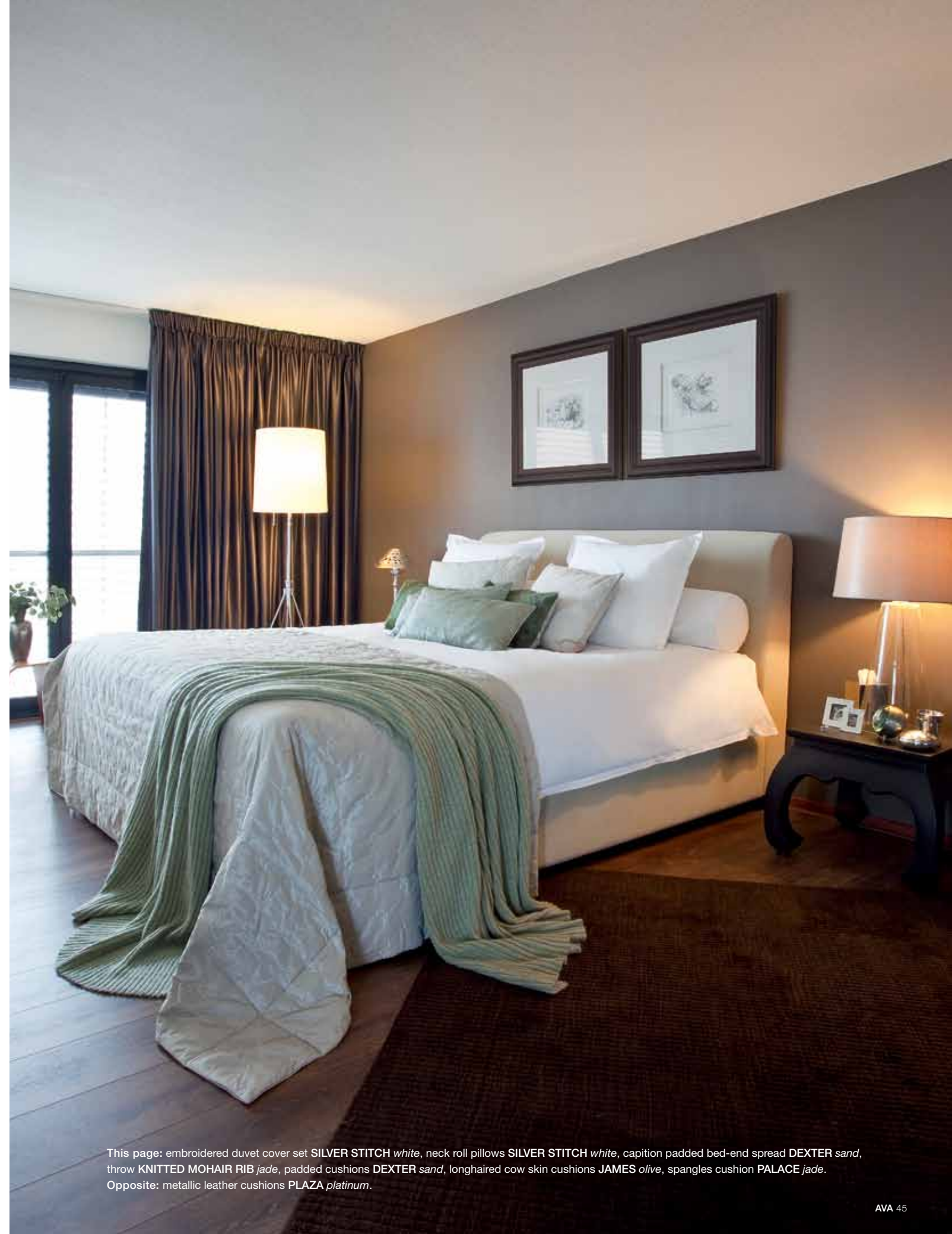


This page: knitted mohair blanket CROCO taupe. Opposite: knitted mohair blanket CROCO taupe, reversible cushions METRO taupe, longhaired cow skin cushions JAMES burgundy.





AVA

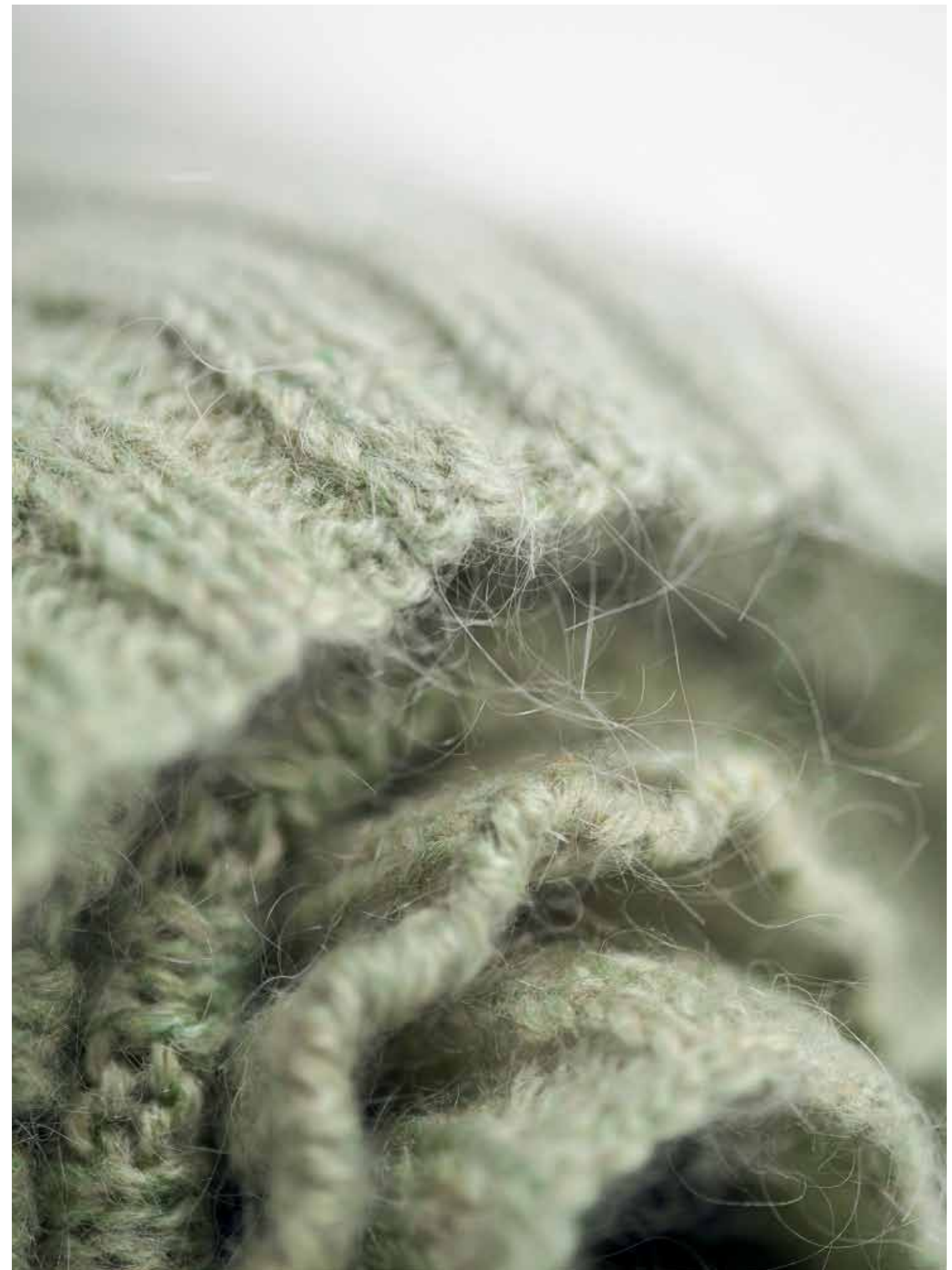


This page: embroidered duvet cover set **SILVER STITCH** *white*, neck roll pillows **SILVER STITCH** *white*, capition padded bed-end spread **DEXTER** *sand*, throw **KNITTED MOHAIR RIB** *jade*, padded cushions **DEXTER** *sand*, longhaired cow skin cushions **JAMES** *olive*, spangles cushion **PALACE** *jade*.  
Opposite: metallic leather cushions **PLAZA** *platinum*.





This page: throw **KNITTED MOHAIR PLAIN** *jade*, spangles cushion **PALACE** *jade*, longhaired cow skin cushion **JAMES** *olive*, metallic leather cushion **PLAZA** *platinum*, wrinkled leather cushion **GARDEN** *warm grey*, coated linen cushion **SILVER**. Opposite: throw **KNITTED MOHAIR RIB** *jade*.





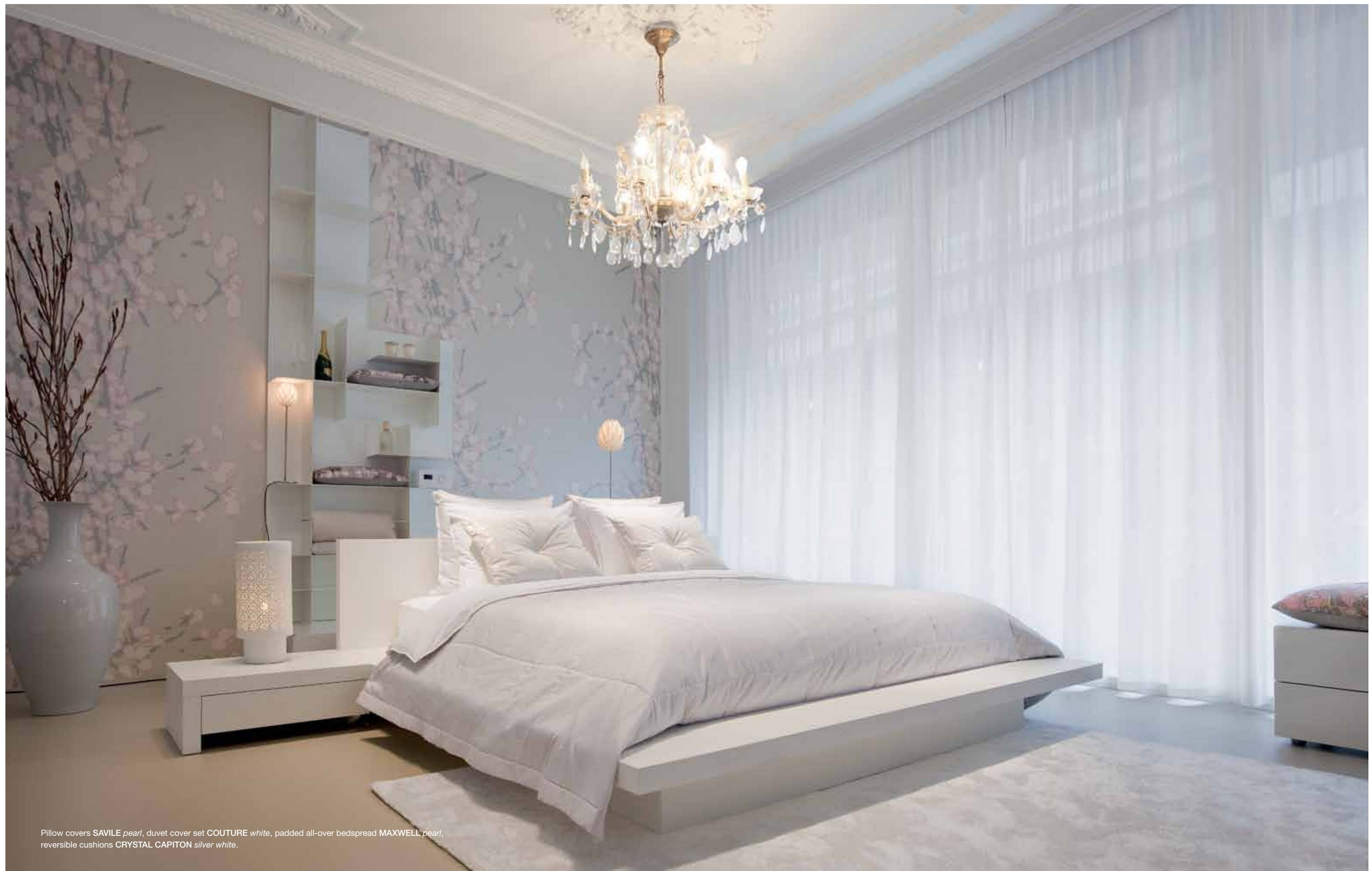


GRACE



This page: reversible cushions CRYSTAL CAPITON *silver white*, one-of-a-kind floral silk cushions VINTAGE in *black* and *white*. Opposite: one-of-a-kind floral silk cushions VINTAGE *soft pink*, reversible cushions CRYSTAL CAPITON *silver white*.





Pillow covers *SAVILE pearl*, duvet cover set *COUTURE white*, padded all-over bedspread *MAXWELL pearl*, reversible cushions *CRYSTAL CAPITON silver white*.





Pillow cover SAVILE in cotton sateen 300 thread count *pearl*, pillow cover COUTURE in cotton percale 300 thread count *white*.

# QUALITY & CARE

## BED LINENS / QUALITY

### Cotton Percale versus Cotton Sateen

Both cotton percale and cotton sateen can be produced from the same yarns. The difference between percale and sateen fabrics is the way they are woven. Percale is made with a basket weave, which interlaces threads at a ratio of 1 to 1, giving it a matte finish. This weave results in a firm and crisp cloth. Sateen has a sheen and feels soft because it is woven in another way. With sateen, the thread interlaces at a ratio of 4 to 1 so that the face of the fabric is covered by the warp yarn, visible by a small twill line. This gives the fabric a smooth, satin-like finish. Sateen is easier to iron and slightly warmer than percale.

### Thread count

Thread count indicates the fineness of a fabric. It is measured by counting the number of threads per square inch of fabric, including both the length threads (the warp), and width threads (the weft). Thread count is often used as a measure of fabric quality for bed linens. Standard cotton thread counts are around 150, while good-quality sheets start at 180. A fabric count of 200 or higher is considered percale. While thread count is important, the most prominent factor in fine fabric is the quality of the cotton. Finer cotton has longer plant fibres, also known as “staple”. With a longer staple, the diameter of the thread can be made smaller. Finer threads can be woven closer together for more threads per inch: this is known as a higher thread count. All of these elements make the fabric softer, more durable and lightweight.

### Egyptian Cotton

The quality of cotton is determined by the “staple” of the plant, which is the natural length of the fibre when picked. Egyptian cotton, which grows exclusively on the banks of the Nile, is long-stapled cotton, thus rendering it a finer, more desirable quality.

Mrs.Me offers three different fabrics for her bed linens:

- Egyptian Cotton Sateen 300 Thread count
- Egyptian Cotton Percale 300 Thread count
- Egyptian Cotton Percale 500 Thread count

### Responsibility

As we spend around a third of our life in bed, quality linen should also have good skin-friendly properties. All our cottons carry the Öko-Tex Standard 100 certification. The independent test institutes of the Öko-Tex Association assure that certified textiles have been tested for harmful substances and thus pose no risks to your health. The certification also guarantees that our textiles are produced according to the highest level of environmental sustainability. Mrs.Me has chosen not to apply the ‘Easy Care’ treatment to her bed linens. Easy Care is a chemical finish that prevents textiles from shrinking and wrinkling. This treatment is done with formaldehyde, a harmful substance that will be released during the use of bed linens. So while Mrs.Me duvet covers do crease, they do not contain toxins. Our packaging does not contain PVC or other toxic chemicals.

## BED LINENS / CARE

### Washing

Mrs.Me recommends a water temperature of 40° Celsius for her bed linens. She advises to wash the bed linens separately from other laundry items, as zippers and buttons might damage the cotton. Never use chlorine bleach or fabric softeners on Egyptian cotton products. These chemicals can permanently damage the fibres. Please note that all natural fibres, including Egyptian cotton, will shrink during the first wash. Because of this, all Mrs.Me bed linens are offered oversized and will shrink to their correct size after washing.

### Drying

Mrs.Me bed linens are made from the finest Egyptian cotton. This type of cotton wrinkles naturally, because it lacks the artificial elasticity of synthetic fabrics. Mrs.Me recommends line drying. When using a tumble dryer, she advises to dry the linens on low heat and remove them from the dryer immediately after the cycle ends. Over-drying creates more wrinkles and results in a shorter life span due to wear.



# DUVET COVER SETS & NECK-ROLL COVERS



**COUTURE**  
*white / graphite stitching*  
Egyptian cotton percale  
thread count 300  
105.1 duvet cover set • single • king • king large 641.1 neck-roll cover



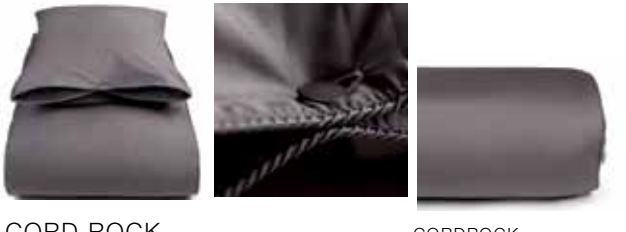
**HARLEY**  
*white / padding*  
Egyptian cotton percale  
thread count 300  
144.1 duvet cover set • single • king • king large 641.1 neck-roll cover



**SAVILE**  
*pearl / white rib tape*  
Egyptian cotton sateen  
thread count 300  
145.1 duvet cover set • single • king • king large 641.1 neck-roll cover



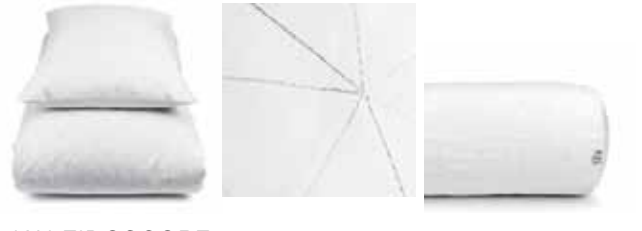
**CORD WHITE**  
*white / silver or taupe piping*  
Egyptian cotton sateen  
thread count 300  
121.3 duvet cover set • single • king • king large 636.1 neck-roll cover



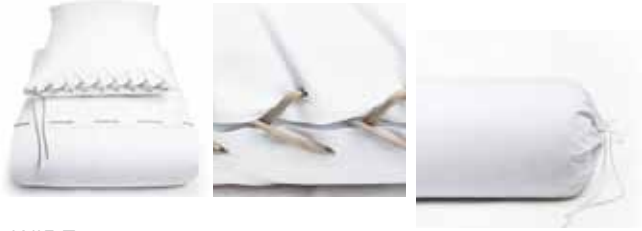
**CORD ROCK**  
*dark grey / graphite piping*  
Egyptian cotton sateen  
thread count 300  
121.4 duvet cover set • single • king • king large 621.4 neck-roll cover



**SILVER STITCH**  
*white / silver lurex embroidery*  
Egyptian cotton percale  
thread count 500  
136.1 duvet cover set • single • king • king large 636.1 neck-roll cover



**KALEIDOSCOPE**  
*white / silver lurex embroidery*  
Egyptian cotton percale  
thread count 500  
131.1 duvet cover set • single • king 631.1 neck-roll cover



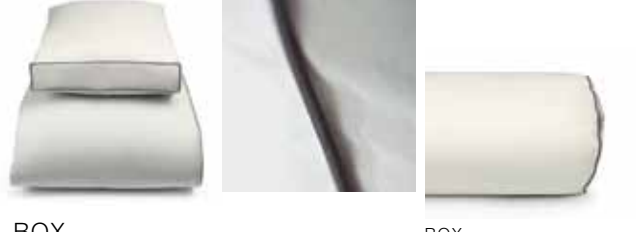
**WIRE**  
*white / taupe lace*  
Egyptian cotton percale  
thread count 500  
140.1 duvet cover set • single • king • king large 641.1 neck-roll cover



**CONTOUR**  
*white / graphite rib tape & buttons*  
Egyptian cotton percale  
thread count 500  
132.1 duvet cover set • single • king • king large 632.1 neck-roll cover



**OBLIQUE**  
*white / ginger rib tape*  
Egyptian cotton percale  
thread count 500  
139.1 duvet cover set • single • king • king large 641.1 neck-roll cover



**BOX**  
*sand / graphite piping*  
Egyptian cotton percale  
thread count 500  
134.2 duvet cover set • single • king • king large 634.2 neck-roll cover

SIZE CHART	
• single	140 x 220 + 40 cm + 1 pillow case
• king	240 x 220 + 40 cm + 2 pillow cases
• king large	260 x 220 + 40 cm + 2 pillow cases
• neck-roll cover	90 x 25 cm



# THROWS & BLANKETS



KNITTED MOHAIR RIB  
mohair acryl melange - *dark grey melee*

231.1 L    blanket    180 x 280 cm



KNITTED MOHAIR RIB  
mohair acryl melange - *petrol*

231.2 M    throw    140 x 200 cm



KNITTED MOHAIR RIB  
mohair acryl melange - *jade*

231.3 M    throw    140 x 200 cm



KNITTED MOHAIR PLAIN  
mohair acryl melange - *light grey*

232.1 L    blanket    180 x 280 cm



KNITTED MOHAIR PLAIN  
mohair acryl melange - *jade*

232.2 M    throw    140 x 200 cm



KNITTED MOHAIR CROCO  
mohair acryl melange - *taupe*

233.1 L    blanket    180 x 280 cm



KNITTED MOHAIR HOPPER  
mohair acryl melange - *camel*

235.1 L    blanket    180 x 280 cm



KNITTED MOHAIR HOPPER  
mohair acryl melange - *blue jean*

235.2 L    blanket    180 x 280 cm



KNITTED MOHAIR BYRON  
mohair acryl melange - *carbon blue*

234.1 L    blanket    180 x 280 cm



# BED SPREADS



## DEXTER

front: **memory taffeta - sand**  
reverse: **wool - off white**

354.1 L    bed-end spread    140 x 280 cm

matching cushions available in 45 x 60 cm



## MASON

front: **silk cotton melange - night blue**  
reverse: **cotton linen chambray - blue jean**

356.1 L    bed-end spread    135 x 280 cm

matching cushions available in 45 x 60 cm



## SILVER PAD

front: **coated linen - silver**  
reverse: **wool - off white**

351.1 L    bed-end spread    140 x 280 cm

matching cushion available in 30 x 60 cm & 45 x 60 cm



## LLOYD

front: **linen - graphite**  
reverse: **woollen flannel - graphite**

358.1 L    bed-end spread    140 x 280 cm

matching cushions available in 45 x 60 cm



## METRO PAD

front: **micro fibre - taupe**  
reverse: **wool - off white**

353.1 L    bed-end spread    140 x 280 cm

matching cushions available in 30 x 60 cm & 45 x 60 cm



## TEDDY

front: **alpaca mohair melange - mouse**  
reverse: **Egyptian cotton sateen, 300 thread count - mouse**

334.1 L    bed-end spread    140 x 280 cm

matching cushion available in 30 x 60 cm & 45 x 60 cm



## TYLER

front: **felted wool linen melange - camel**  
reverse: **cotton linen chambray - camel**

455.1 L    bed-end spread    140 x 280 cm

matching cushions available in 45 x 60 cm



## TYLER

front: **felted wool linen melange - light grey**  
reverse: **cotton linen chambray - light grey**

455.2 L    bed-end spread    140 x 280 cm

matching cushions available in 45 x 60 cm



## MAXWELL

front: **Egyptian cotton sateen, 300 thread count - pearl**  
reverse: **Egyptian cotton percale, 200 thread count - pearl**

701.1 XL    full-size bedspread    280 x 305 cm



# FABRIC CUSHIONS



## CRYSTAL CAPITON

front:	linen polyester melange - <i>silver white</i>	
reverse:	herringbone wool with lurex - <i>off white -silver</i>	
531.1 S	cushion	30 x 60 cm
531.1 M	cushion	45 x 60 cm



## DEXTER

front:	memory taffeta - <i>sand</i>	
reverse:	wool - <i>off white</i>	
454.1 M	cushion	45 x 60 cm

matching bed-end spread available



## LLOYD

front:	linen - <i>graphite</i>	
reverse:	woollen flannel - <i>graphite</i>	
458.1 M	cushion	45 x 60 cm

matching bed-end spread available



## MASON

front:	silk cotton melange - <i>night blue</i>	
reverse:	cotton linen chambray - <i>blue jean</i>	
456.1 M	cushion	45 x 60 cm

matching bed-end spread available



## METRO CAPITON

front:	micro fibre - <i>taupe</i>	
reverse:	wool - <i>off white</i>	
453.1 S	cushion	30 x 60 cm
453.1 M	cushion	45 x 60 cm

matching bed-end spread available



## SILVER

front:	coated linen - <i>silver</i>	
reverse:	wool - <i>off white</i>	
451.1 M	cushion	45 x 60 cm

matching bed-end spread available



## TEDDY

front:	alpaca mohair melange - <i>mouse</i>	
reverse:	Egyptian cotton sateen - <i>mouse</i>	
534.1 S	cushion	30 x 60 cm
534.1 M	cushion	45 x 60 cm

matching bed-end spread available



## FROZEN

front:	metallic viscose linen - <i>silver</i>	
reverse:	wool - <i>off white</i>	
535.1 S	cushion	30 x 60 cm



## TYLER

front:	felted wool linen melange - <i>light grey</i>	
reverse:	cotton linen chambray - <i>light grey</i>	
455.2 M	cushion	45 x 60 cm

matching bed-end spread available



## PALACE

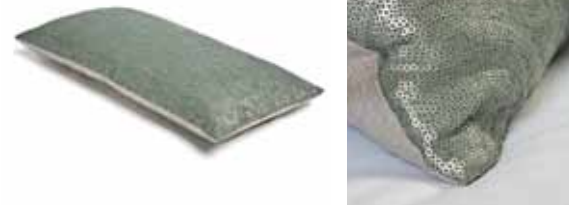
front:	spangles - <i>ginger</i>	
reverse:	coated linen - <i>silver</i>	
455.2 S	cushion	30 x 60 cm



## TYLER

front:	wool acryl melange - <i>camel</i>	
reverse:	cotton linen bamboo chambray - <i>camel</i>	
455.1 M	cushion	45 x 60 cm

matching bed-end spread available



## PALACE

front:	spangles - <i>jade</i>	
reverse:	coated linen - <i>silver</i>	
455.1 S	cushion	30 x 60 cm



# FABRIC CUSHIONS



SUNBURST

front:	embossed velvet - <i>smokey gold</i>		
reverse:	coated linen - <i>silver</i>		
426.3 M	cushion	45 x 60 cm	



VINTAGE

front:	vintage silk - <i>multicolour</i>		
reverse:	coated linen - <i>silver</i>		
420 S	cushion	30 x 60 cm	

images shown are examples only, all Vintage cushions are one-of-a-kind



WEBSTER

front:	viscose raffia - <i>camel</i>		
reverse:	cotton chambray - <i>camel</i>		
546.2 M	cushion	45 x 60 cm	



VINTAGE

front:	vintage silk - <i>multicolour</i>		
reverse:	coated linen - <i>silver</i>		
420 M	cushion	45 x 60 cm	

images shown are examples only, all Vintage cushions are one-of-a-kind



WEBSTER

front:	viscose raffia - <i>white</i>		
reverse:	cotton chambray - <i>white</i>		
546.1 M	cushion	45 x 60 cm	

# LEATHER CUSHIONS



JAMES

front:	longhaired cow skin - <i>camel</i>		
reverse:	coated linen - <i>silver</i>		
551.1 S	cushion	30 x 60 cm	



JAMES

front:	longhaired cow skin - <i>olive</i>		
reverse:	coated linen - <i>silver</i>		
551.2 S	cushion	30 x 60 cm	



JAMES

front:	longhaired cow skin - <i>burgundy</i>		
reverse:	coated linen - <i>silver</i>		
551.3 S	cushion	30 x 60 cm	



JAMES

front:	longhaired cow skin - <i>ink</i>		
reverse:	coated linen - <i>silver</i>		
551.4 S	cushion	30 x 60 cm	



PARK

front:	croco embossed cow skin - <i>graphite</i>		
reverse:	coated linen - <i>silver</i>		
541.1 S	cushion	30 x 60 cm	



GARDEN

front:	metallic wrinkled leather - <i>warm grey</i>		
reverse:	coated linen - <i>silver</i>		
545.1 M	cushion	45 x 60 cm	



# LEATHER CUSHIONS



PAVILION

front:	metallic leather - <i>graphite</i>	
reverse:	coated linen - <i>silver</i>	
543.1 S	cushion	30 x 60 cm



PAVILION

front:	metallic leather - <i>copper</i>	
reverse:	coated linen - <i>silver</i>	
543.2 S	cushion	30 x 60 cm



PLAZA

front:	metallic leather - <i>platinum</i>	
reverse:	coated linen - <i>silver</i>	
544.1 S	cushion	30 x 60 cm



PLAZA

front:	metallic leather - <i>white gold</i>	
reverse:	coated linen - <i>silver</i>	
544.2 S	cushion	30 x 60 cm



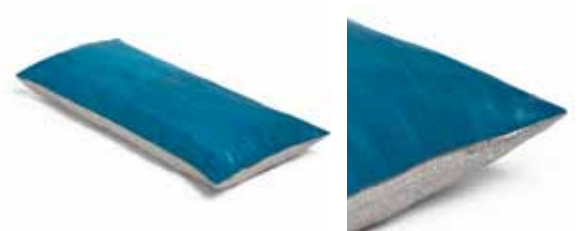
AVENUE

front:	fish leather - <i>white</i>	
reverse:	coated linen - <i>silver</i>	
542.1 S	cushion	30 x 60 cm



AVENUE

front:	fish leather - <i>ebony</i>	
reverse:	coated linen - <i>silver</i>	
542.3 S	cushion	30 x 60 cm



AVENUE

front:	fish leather - <i>azur</i>	
reverse:	coated linen - <i>silver</i>	
542.2 S	cushion	30 x 60 cm



# COMPANY

Mrs.Me offers home couture for the lounge and the bedroom. The company was founded in 2003 by designer and creative director Lianne Ernst and is based in the heart of Amsterdam.

# COLLECTIONS

Always in touch with fashion and forever in love with the craftsmanship of couture, Mrs.Me designs innovative yet timeless product ranges. Her collections can be found in international shops specialized in contemporary interior design and quality beds and bed linens. In 2005, Mrs.Me launched her first collection, Bedtime Stories, followed by Falcon & the Swan and Into the Night. In 2009, Mrs.Me presented Metropolitan, a collection inspired by twelve vibrant cities. In fall 2011 the Alter Ego collection was introduced. New items will be added to this collection on a regular basis.

# CUSTOM MADE

Mrs.Me also develops custom made products and collections for hotels, yacht owners, interior designers and architects. She specializes in exclusive and personalized products for bedrooms, bathrooms, lounges and dining rooms.

# COMPANY VALUES

Mrs.Me designs and develops products in accordance with the following standards:

- highest quality in fabrics, sourced in regions known for their expertise
- design value, inspired by the latest fashion trends and finished with couture detailing
- social and environmental responsibility.

## CREDITS

Images:  
Went&Navarro  
[www.wentennavarro.nl](http://www.wentennavarro.nl)

Text:  
Minou op den Velde  
[www.minouopdenvelde.nl](http://www.minouopdenvelde.nl)

## SPECIAL THANKS

Tessa, Paul, Berry & Hans, Yill & Jeroen, Paul & Erik, Liz, Claudia & Michel, Bodo, Jeanne & Rinaldo

## PRESS INFO

Images are available for download in high-resolution quality on our website.  
Please contact us at [info@mrsme.com](mailto:info@mrsme.com)

## WHERE TO BUY

Please visit our website [www.mrsme.com](http://www.mrsme.com) for store locations.





---

Reguliersdwaarsstraat 57A  
1017 BK Amsterdam  
The Netherlands

---

Tel	+31 (0)20 320 3024
E-mail	<a href="mailto:info@mrsme.com">info@mrsme.com</a>
Website	<a href="http://www.mrsme.com">www.mrsme.com</a>